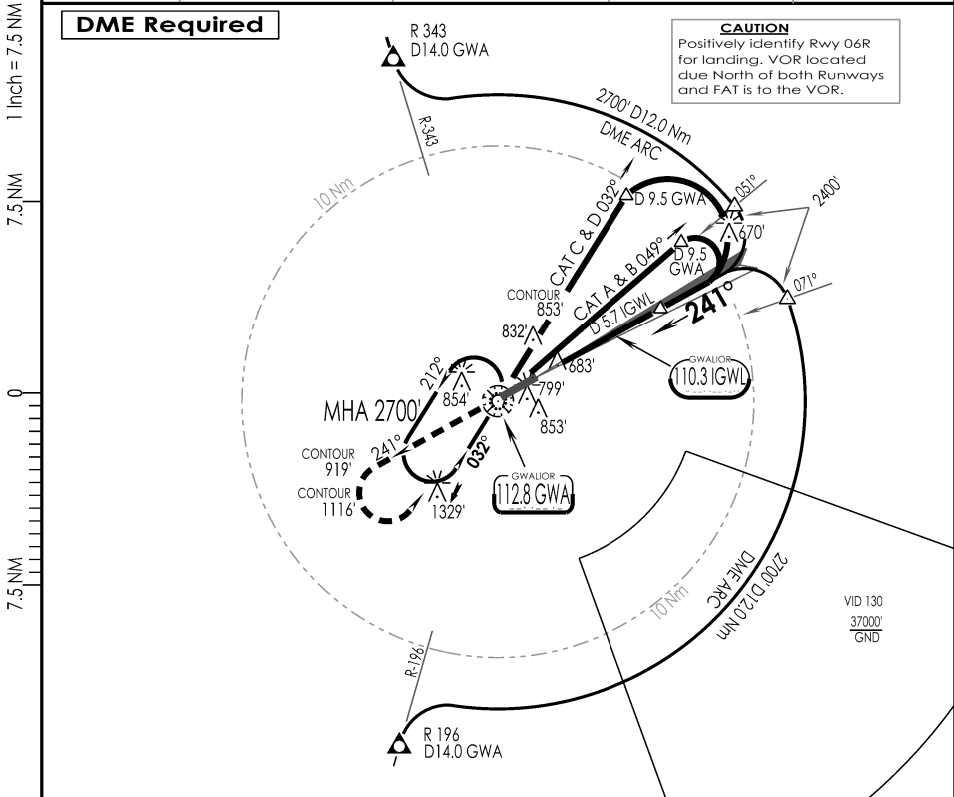


VIGR  
Gwalior

IAF  
06 DEC 18

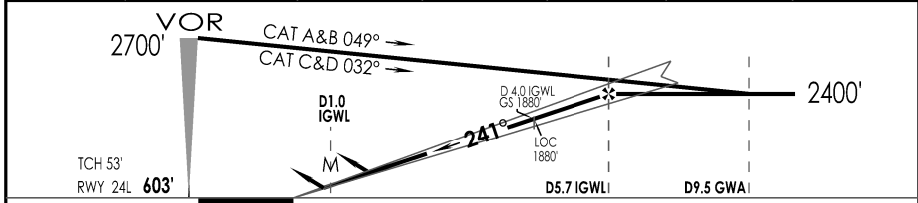
Gwalior, India  
CAT I ILS RWY 24L

Gwalior Approach 122.7 VC, UC			Gwalior Tower 122.7 VC		ATIS 112.8	2700'
VOR GWA 112.8	ILS IGWL 110.3	FINAL Apch Crs 241°	GS D 4.0 IGWL 1880'	DA (H) As per table	Apt Elev 626' RWY 603'	
<b>MISSED APCH:</b> Climb STRAIGHT AHEAD to 2700', then turn LEFT to join VOR hold or as directed by ATC.						
Alt Set: hPa		Rwy Elev: 21 hPa	Trans level: By ATC		Trans alt: 4000'	MSA GWA VOR



SURVEY OF INDIA REPORT : 2014-15

LOC	IGWL DME	2.0	3.0	4.0	5.0	5.7
GS OUT	ALTITUDE (ft)	1240	1560	1880	2200	2400



GND SPEED KTS	80	100	120	140	160	180		2700'	
GRADIENT 5.2 %	424	531	637	743	849	955			
MAP AT D 1.0 IGWL									

STRAIGHT - IN LANDING Rwy 24L				CIRCLE - TO - LAND		
ILS		LOC (GS OUT)				
CDFA		MDA(H)				
AB: 806' (203')	CD: 825' (222')	1050' (447')				
FULL	ALS OUT	FULL	ALS OUT	Max Kts	MDA (H)	VIS
A			RVR 1500m	100	1150' (531')	2800m
B	RVR 550m	RVR 1200m	RVR 1400m	135		
C				180		
D				205	1730' (1111')	5000m

LIGHTING : CAT II(24L),SALS(06R),STD OWL LIGHTING(24R/06L),PAPI(24L/06R)3.0°,PAPI(24R/06L)2.5°

CHANGES : NOMENCLATURE

IPDC, DTE OF OPS (T & H)

AIRPORTS AUTHORITY OF INDIA

AMD 03/2025